

**SYBIL JORDAN HAMPTON EVENT:
UA Parking and Law School Access**

Parking Options

For general directions to the campus from the surrounding area, visit the UA Law School website here: <https://law.uark.edu/future-students/visit.php>

Two parking locations on campus are described below, followed by a map:

Free option:

Parking is free after 5:00 in the “pit” parking lot (circled in green on the map) in front of Razorback Stadium near the corner of Maple St. and Razorback Rd.

From there, you can walk up the hill on Maple to the Law School Building, Waterman Hall (circled in green).

If you do not wish to walk from the parking lot, you can take a free bus up the hill to the Student Union building (circled in green). There are three different buses that make this trip so you should not have to wait more than 15 minutes at the most. You will want to park on the west (Razorback Road) side of the lot, where you see the red bus symbol, and wait for the bus at the bus stop sign.

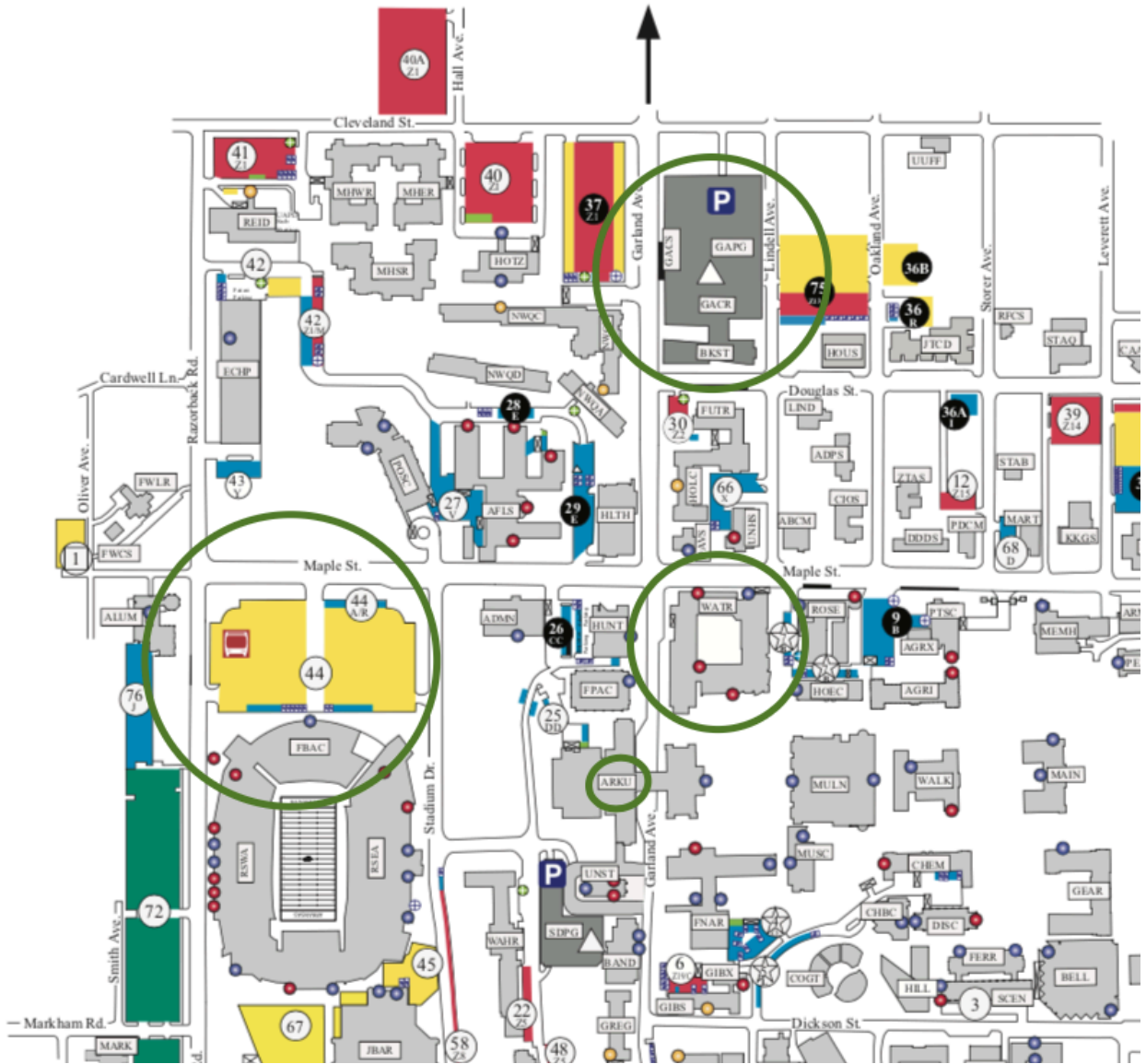
From the Student Union, the Law School building is just a short walk across Garland Ave.

Paid option:

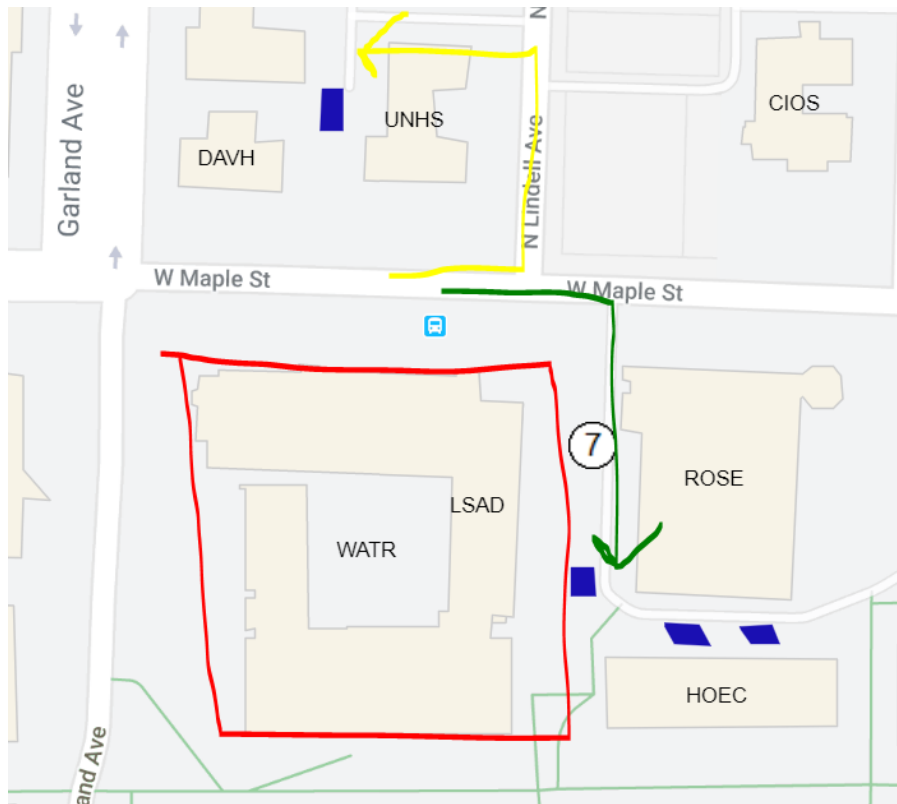
Covered parking spots are available in the Garland Ave. Parking Garage (circled in Green), located near the corner of Garland Ave and Cleveland St. It is generally easiest to enter from Cleveland St.

Parking in the garage costs \$.75 per hour. Note the number on the parking spot you choose and pay at one of the kiosks located on each level. Elevators or stairs are available to reach the Garland Ave. level. Turn left on Garland exiting the garage and continue to the corner of Maple St. The Law School building is directly across Maple.

To Agricultural Research
Extension Center



Building Access – Law School



The Law School building (WATR) is highlighted in red. It is on the corner of Maple and Garland.

Handicapped parking is available behind University House, which is located across Maple St. from the Law School. Turn onto Lindell Ave from Maple then make an immediate left into the driveway. The direction is indicated by a yellow arrow.

Handicapped parking is also available just beyond the Law School. Turn right into the alleyway beyond the law school as indicated by the green arrow. There are several handicapped parking spaces available, as shown by the blue rectangles. Follow the sidewalk from the parking area to the Norma Lea Beasley Entrance Hall to the Law School.

Entering the Law School building from Maple Ave: the EJ Ball Courtroom is located on the second floor of the Law School. Elevators are available in the atrium to the second floor. Staircases are also accessible at the Maple Ave entrance. There will be signage in the school at all points of entry directing visitors to the courtroom.

If entering via the Norma Lea Beasley Entrance Hall, on the side facing the university mall, the main staircase will be in front of you as you enter. Elevators are also available to the second floor and are located at the west end of the atrium. Signage will direct you to the Courtroom on the second floor.